

MAY 2012 Rs. 60

DESTINATION

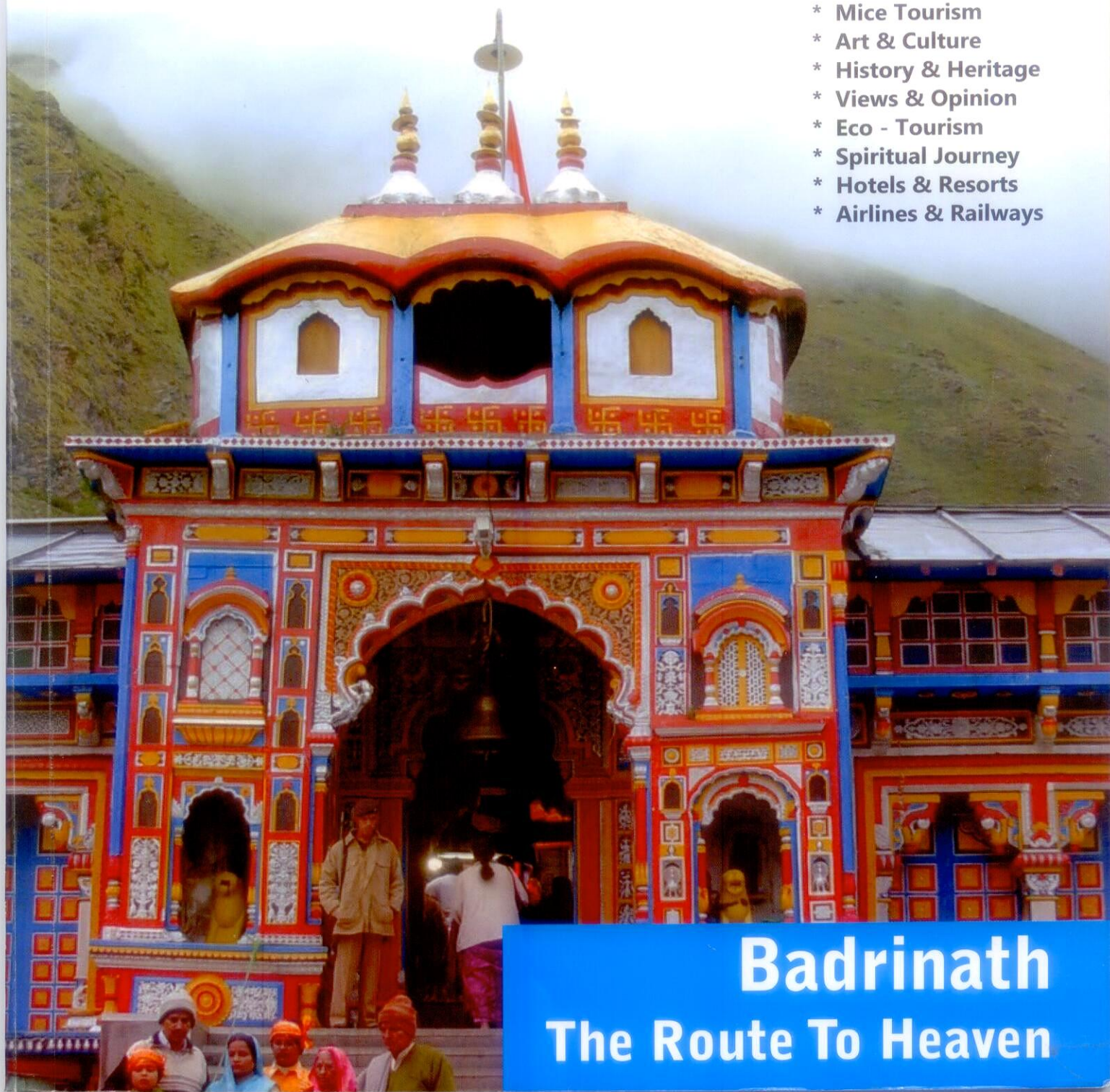
WORLDWIDE

Volume X Issue 8

BEST TRAVEL TRADE PUBLICATION - 2004 : IATO

tourism and travel magazine

- * Mice Tourism
- * Art & Culture
- * History & Heritage
- * Views & Opinion
- * Eco - Tourism
- * Spiritual Journey
- * Hotels & Resorts
- * Airlines & Railways



Badrinath
The Route To Heaven

Chennai New Airport Terminal Gets Refurbished

AAI has conceptualized and augmented incredible changes to bring Chennai Airport at par with international standards, right from passenger capacity in the Terminal building to facilitating passengers with great facilities.



C

hennai airport is the main hub for arrivals and departures in south India. It services around 8 million passengers a year, over half of which are flying domestically. The airport is operated by the government run Airports Authority of India.

The swanky new terminal is nearing completion and the Airports Authority of India (AAI) had a successful trial of the new domestic terminal-2.

The new terminal is an elegant modern structure, defined by its dramatic twin wing-like hovering roofs, providing a 300-metre-long column-free space. The open web super steel structure, hidden from view, rises to support the twin-curved roofs. The structural framework will allow natural light to penetrate the terminal with a constantly changing pattern of shade and shadow.

The new domestic terminal located adjacent to the existing domestic terminal will be able to handle 3,300 passengers per hour and a total of 10 million passengers per annum.





Another speciality in the building is the energy conservation efficiency, which will be achieved by the use of latest technologies, such as use of CFL and T5 lamps for illumination.

Water efficient landscaping, rainwater harvesting, water efficient fixtures, use of grey water for air-conditioning cooling system and an innovative effluent treatment plant to treat waste water were some of the green measures done

at the new building, he said.

This arrival-cum-departure terminal will be more spacious and better equipped with more number of check-in counters and X-ray machines, among other facilities.

In order to facilitate passengers and improve efficiency, three aero-bridges have been provided at the existing Domestic Terminal Building. Similarly, 5 aero-bridges serve international passengers.

AAI has conceptualized and augmented incredible changes to bring Chennai Airport at par with international standards, right from passenger capacity in the Terminal building to facilitating passengers with great facilities.

The Creative Group (New Delhi) with Global Associates Frederic

Schwartz Architects & Gansler won the competition for the New Terminal Building. The awe-inspiring Kamraj Domestic Terminal, in particular, showcases sustainable technologies. The Terminal is a tribute to 'green technology' and appears like a virtual garden. Passengers are treated to lush greenery while moving around the Terminal.

The three-storeyed structure, which is 984 feet long and encompasses around 781,460 square feet, rests on two lush, sustainable gardens. The hovering wing-like roof of the new Terminal attracts instant attention. The building is totally column-free, with glass curtain walls and looks chic and classy.



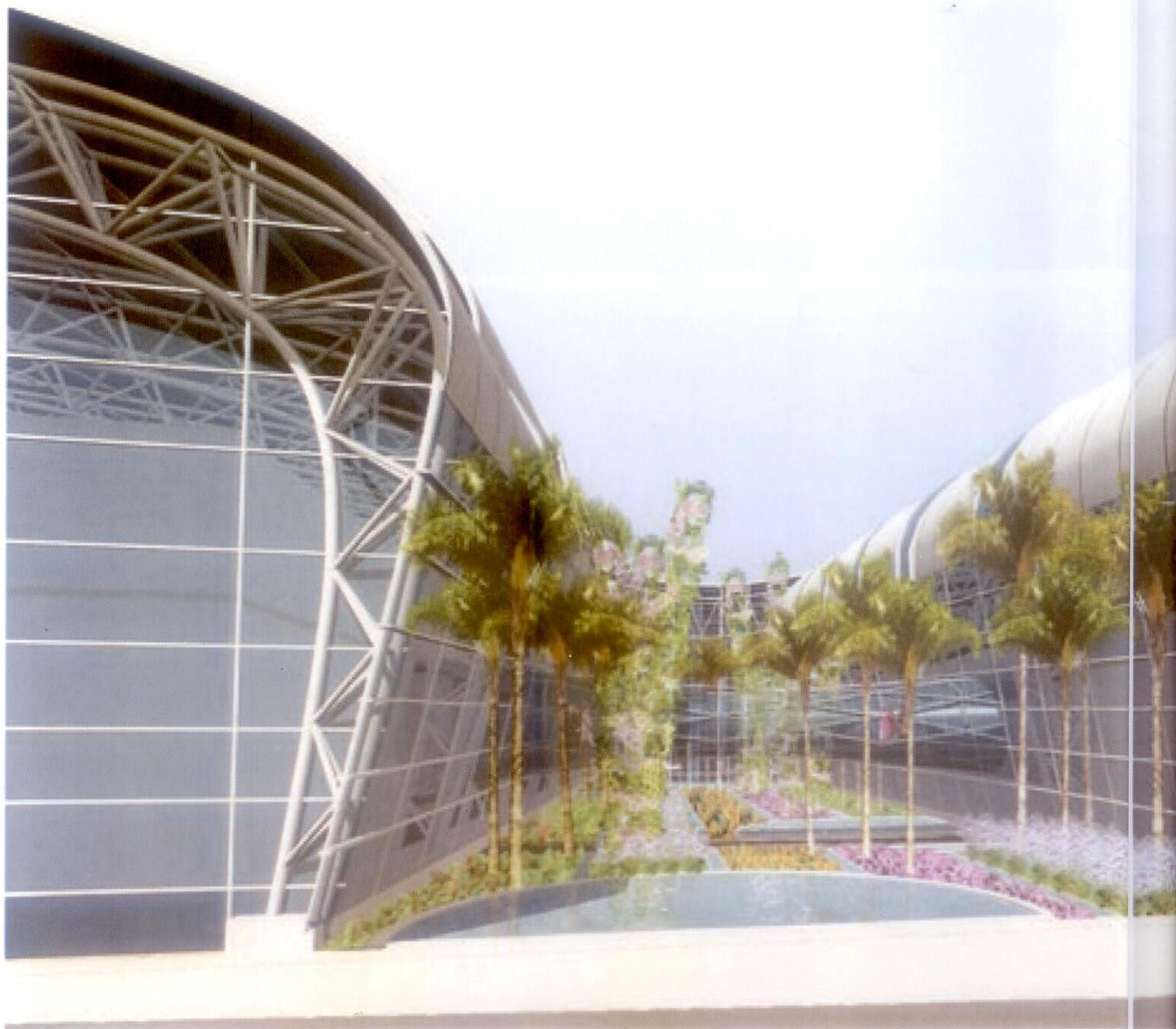
Unlike any other airport in the world, the gardens at the Chennai International Airport are visible throughout the new terminal, and the seamless bonding between the built form and the landscape is pleasing to the eyes.

The Terminal Building is equipped with modern passenger facilities and state-of-the-art security arrangements. AAI has added numerous other facilities to facilitate its passengers, both in the Domestic as well as

International Terminal buildings. In the Domestic Terminal a total of 12 escalators have been provided and 21 passenger lifts. The number of Check-In Counters at Departure total 105, excluding 12 e-ticketing counters. There are 12 Security gates with frisking booths and 8 Baggage Conveyors. At Arrival, there are 8 Baggage Claim Conveyors and 10 Passenger Boarding bridges or Aero-bridges.

The International Terminal provides 8 escalators and fifteen passenger lifts.

Departure boasts 95 Check-In Counters, 34 Immigration Counters, 6 Custom Counters, 8 Baggage Conveyors. Arrival has 38 Immigration Counters, 28 Custom Counters, 7 Baggage Claim Conveyors and 8 Passenger Boarding bridges or Aerobridges.



A streamlined International Cargo Terminal at Chennai Airport, which is used for export cargo, has 94 slots for storage of built-up pallets, and is fully mechanized with an Elevated Transfer Vehicle (ETV) system. Phase II of the Cargo terminal, which was operational since April 2008, is also used for export cargo and has 82 slots for storage of built-up pallets and is fully mechanised with an ETV system. Thus, a total area of 16,500 square metres is available for export cargo with an

annual handling capacity of 2-lakh metric tonnes of cargo. The existing import cargo is being handled through existing sheds. The import cargo handling capacity through Chennai Airport is proposed to be augmented through phase III of the expansion plan. This building, with an area of 30,015 square metres, would handle 4 lakh tonnes of cargo, for which work is in progress.

The structure, which is one of a kind in the sub-continent features a "Green Gate", and a parking garage with a green roof and rain water capture systems have already attained international attention and appreciation.

